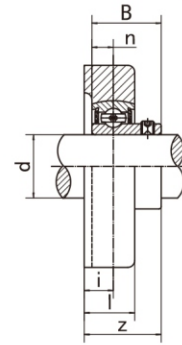
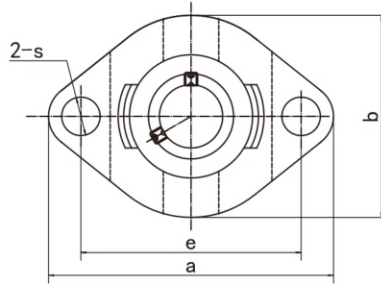
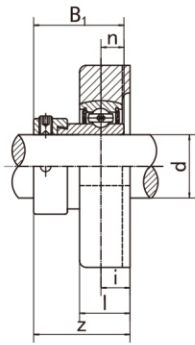


SAFW2
(SA2-Fitted)

Flange Unit
(Light duty)

SBFW2
(SB2-Fitted)



SAFW2

SBFW2

Unit NO.	Dimensions (mm / in.)										Bolt Size mm/in.	Bearing No.	Housing No.	Weight (kg)											
	d	a	e	b	i	s	l	z	B ₁	n															
SAFW 201 201-8	12 1/2	81	63.5	58.7	8.5	7	15	30.6	28.6	6.5	M6	SA201	FW201	0.30											
SAFW 202 202-9 202-10	15 9/16 5/8											3-3/16			2-1/2	2-5/16	21/64	9/32	19/32	1-13/64	1.1260	0.2559	1/4	SA202 SA202-9 SA202-10	FW202
SAFW 203 203-11	17 11/16											SA203 SA203-11			FW203										
SAFW 204 204-12	20 3/4	90.5 3-9/16	71.4 2-13/16	66.5 2-5/8	9.5 3/8	9 23/64	17 43/64	33 1-19/64	31 1.2204	7.5 0.2953	M8 5/16	SA204 SA204-12	FW204	0.41											
SAFW 205 205-13 205-14 205-15 205-16	25 13/16 7/8 15/16 1	97 3-13/16	76.2 3	71 2-51/64	9.5 3/8	9 23/64	17.5 11/16	33 1-19/64	31 1.2204	7.5 0.2953	M8 5/16	SA205 SA205-13 SA205-14 SA205-15 SA205-16	FW205	0.48											
SAFW 206 206-17 206-18 206-19 206-20	30 1-1/16 1-1/8 1-3/16 1-1/4	112.5 4-7/16	90.5 3-9/16	84 3-5/16	11.5 29/64	11.5 29/64	20.5 13/16	38.2 1-1/2	35.7 1.4055	9 0.3543	M10 3/8	SA206 SA206-17 SA206-18 SA206-19 SA206-20	FW206	0.73											
SAFW 207 207-20 207-21 207-22 207-23	35 1-1/4 1-5/16 1/3/8 1-7/16	126 4-61/64	100 3-15/16	94 3-45/64	12.5 1/2	11.5 29/64	22 7/8	41.9 1-21/32	38.9 1.5315	9.5 0.3740	M10 3/8	SA207 SA207-20 SA207-21 SA207-22 SA207-23	FW207	1.03											
SAFW 208 208-24 208-25	40 1-1/2 1-9/16	150 5-29/32	119 4-11/16	100 3-15/16	14.5 9/16	14 35/64	24 15/16	47.2 1-55/64	43.7 1.7205	11 0.4331	M12 1/2	SA208 SA208-24 SA208-25	FW208	1.35											

Unit NO.	Dimensions (mm / in.)										Bolt Size mm/in.	Bearing No.	Housing No.	Weight (kg)											
	d	a	e	b	i	s	l	z	B	n															
SBFW 201 201-8	12 1/2	81	63.5	58.7	8.5	7	15	24.5	22	6	M6	SB201	FW201	0.27											
SBFW 202 202-9 202-10	15 9/16 5/8											3-3/16			2-1/2	2-5/16	21/64	9/32	19/32	31/32	0.8661	0.2362	1/4	SB202 SB202-9 SB202-10	FW202
SBFW 203 203-11	17 11/16											SB203 SB203-11			FW203										
SBFW 204 204-12	20 3/4	90.5 3-9/16	71.4 2-13/16	66.5 2-5/8	9.5 3/8	9 23/64	17 43/64	27.5 1-5/64	25 0.9843	7 0.2756	M8 5/16	SB204 SB204-12	FW204	0.38											
SBFW 205 205-13 205-14 205-15 205-16	25 13/16 7/8 15/16 1	97 3-13/16	76.2 3	71 2-51/64	9.5 3/8	9 23/64	17.5 11/16	29 1-9/64	27 1.0630	7.5 0.2953	M8 5/16	SB205 SB205-13 SB205-14 SB205-15 SB205-16	FW205	0.44											
SBFW 206 206-17 206-18 206-19 206-20	30 1-1/16 1-1/8 1-3/16 1-1/4	112.5 4-7/16	90.5 3-9/16	84 3-5/16	11.5 29/64	11.5 29/64	20.5 13/16	33.5 1-5/16	30 1.1811	8 0.3150	M10 3/8	SB206 SB206-17 SB206-18 SB206-19 SB206-20	FW206	0.67											
SBFW 207 207-20 207-21 207-22 207-23	35 1-1/4 1-5/16 1/3/8 1-7/16	126 4-61/64	100 3-15/16	94 3-45/64	12.5 1/2	11.5 29/64	22 7/8	36 1-27/64	32 1.2598	8.5 0.3346	M10 3/8	SB207 SB207-20 SB207-21 SB207-22 SB207-23	FW207	0.90											
SBFW 208 208-24 208-25	40 1-1/2 1-9/16	150 5-29/32	119 4-11/16	100 3-15/16	14.5 9/16	14 35/64	24 15/16	39.5 1-9/16	34 1.3386	9 0.3543	M12 1/2	SB208 SB208-24 SB208-25	FW208	1.18											

Note: To specify relubricatable units, add "G" suffix, (e.g., SBFW205-16G)